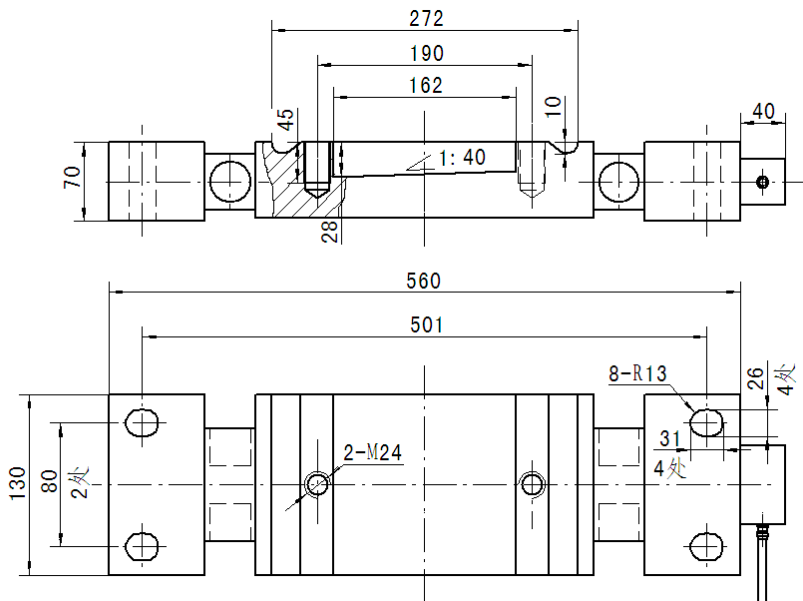


HM9J

Specification:

Capacity		15t / 20t	30t
Accuracy class		C2	
Maximum number of verification intervals	n_{max}	2000	
Minimum load cell verification interval	V_{min}	$E_{max}/3000$	
Combined error	(%FS)	$\leq \pm 0.050$	
Creep	(%FS/30min)	$\leq \pm 0.038$	
Temperature effect on zero	(%FS/10°C)	$\leq \pm 0.028$	
Temperature effect on sensitivity	(%FS/10°C)	$\leq \pm 0.047$	
Output sensitivity	(mV/V)	2.0 ± 0.2	1.6 ± 0.2
Input resistance	(Ω)	750 ± 10	
Output resistance	(Ω)	703 ± 2	
Insulation Resistance	(M Ω)	≥ 5000 (50VDC)	
Output on Zero	(%FS)	1.0	
Temperature compensated	(°C)	-10~+40	
Temperature allowed	(°C)	-35~+70	
Excitation Recommended	(V)	5~12 (DC)	
Excitation Max	(V)	18 (DC)	
Safe overload	(%FS)	150	
Ultimate overload	(%FS)	300	
		IP 68	

DIMENSION mm



Wiring:

Four connector cable,
Diameter: $\Phi 5.5mm$
length 20m

